

ALEXANDRA PARK AVENUE

PHASE 2
ALEXANDRA PARK AVENUE
SITE LAYOUT



Site layout not to scale and is for illustration purposes only / CGI for illustration purposes only



THE BYRNE and
THE ABBOTT



THE CORNWELL



THE ELLEN



THE ABBOTT



THE DICKSON
APARTMENTS



THE BLAKE and
THE CRANMORE



028 90 832 832
colingrahamresidential.com



028 9068 2777
pinpointproperty.com



bluehousedevlopment.com

**ALEXANDRA
PARK AVENUE**



THE BYRNE

THE ABBOTT

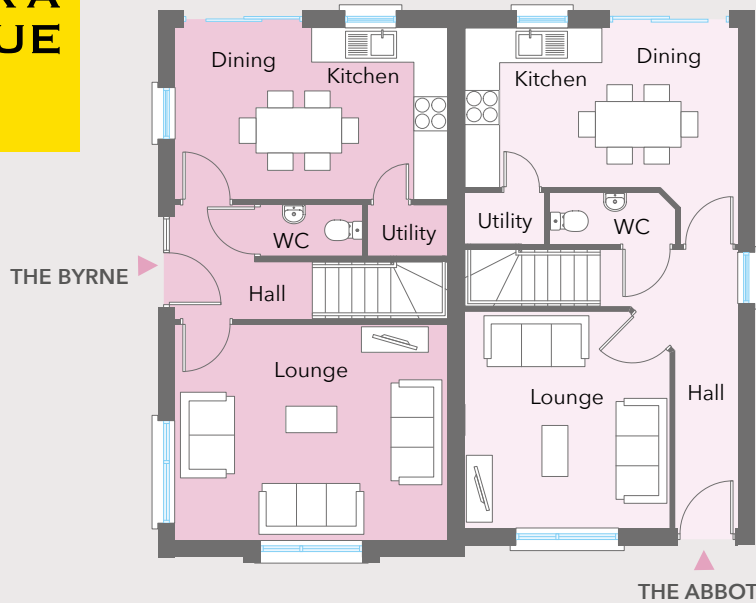
CGI shown for illustration purposes only

THE BYRNE and THE ABBOTT

3 BED SEMI DETACHED | THE BYRNE c. 943 sq ft / 87.6 sq m approx | THE ABBOTT c. 920 sq ft / 85.4 sq m approx

ALEXANDRA PARK AVENUE

GROUND FLOOR



GROUND FLOOR | THE BYRNE

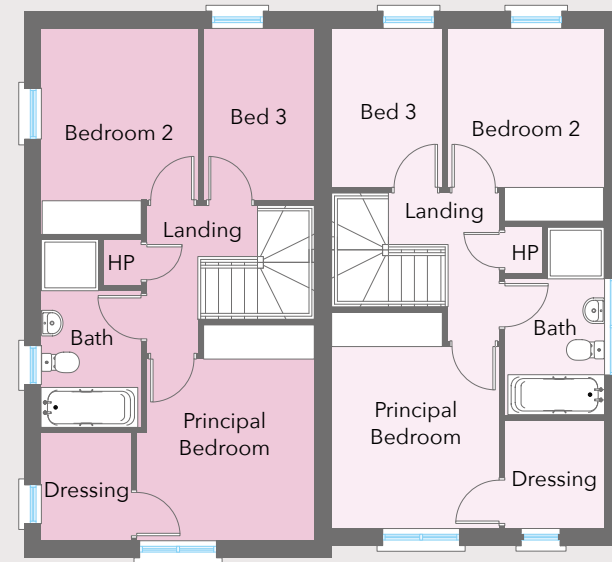
Entrance Hall with separate WC

Lounge	ft	15'9" x 12'7"	m	4.83 x 3.85
Kitchen Dining	ft	15'9" x 9'4"	m	4.83 x 2.84
Utility	ft	4'8" x 2'10"	m	1.45 x 0.90

FIRST FLOOR

Principal Bedroom	ft	12'7" x 10'6"	m	3.87 x 3.23
Dressing	ft	6'7" x 4'10"	m	2.02 x 1.50
Bedroom 2	ft	11'9" x 9'1"	m	3.60 x 2.75
Bedroom 3	ft	9'10" x 6'5"	m	3.00 x 1.98
Bathroom	ft	10'7" x 5'6"	m	3.24 x 1.70

FIRST FLOOR



Floor plans are not to scale and all dimensions are approximate

GROUND FLOOR | THE ABBOTT

Entrance Hall with separate WC

Lounge	ft	12'5" x 11'9"	m	3.80 x 3.60
Kitchen Dining	ft	15'9" x 9'4"	m	4.83 x 2.84
Utility	ft	4'8" x 2'10"	m	1.45 x 0.90

FIRST FLOOR

Principal Bedroom	ft	12'5" x 9'10"	m	3.80 x 3.03
Dressing	ft	5'9" x 5'6"	m	1.80 x 1.70
Bedroom 2	ft	11'3" x 9'1"	m	3.44 x 2.75
Bedroom 3	ft	9'4" x 6'5"	m	2.84 x 1.98
Bathroom	ft	11'2" x 5'6"	m	3.39 x 1.70

THE BYRNE and THE ABBOTT

3 BED SEMI DETACHED | THE BYRNE c. 943 sq ft / 87.6 sq m approx

| THE ABBOTT c. 920 sq ft / 85.4 sq m approx

**COLIN
GRAHAM
RESIDENTIAL**
028 90 832 832
colingrahamresidential.com

pinpoint.
028 9068 2777
pinpointproperty.com

**BlueHouse
Development**
bluehousedevlopment.com

ALEXANDRA
PARK AVENUE



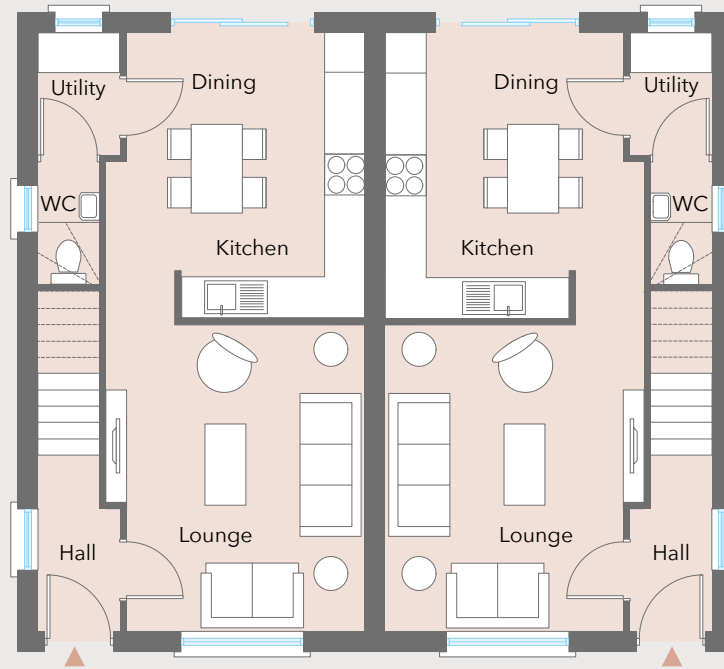
CGI shown for illustration purposes only

THE CORNWELL

3 BED SEMI DETACHED | c. 920 sq ft / 85.4 sq m approx

ALEXANDRA PARK AVENUE

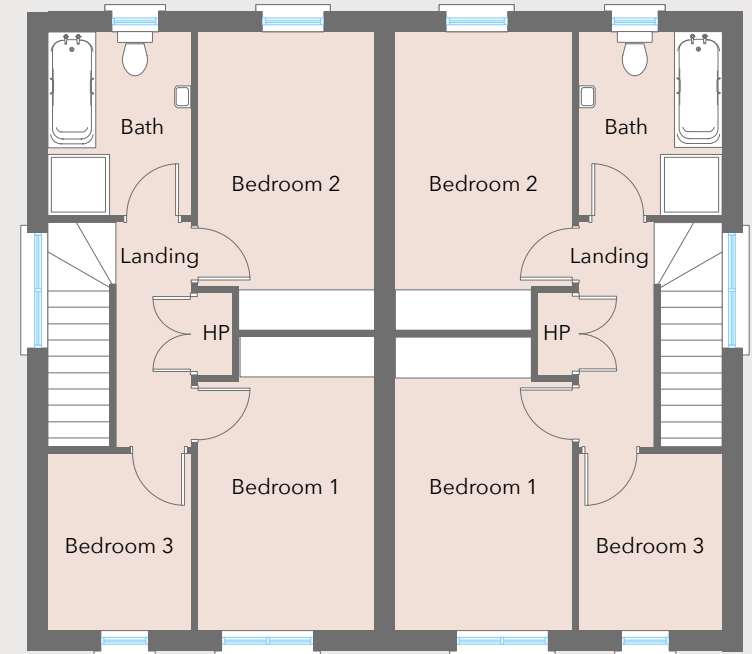
GROUND FLOOR



GROUND FLOOR

Entrance Hall			
Lounge	ft	15'3" x 11'6"	m 4.64 x 3.53
Kitchen Dining	ft	13'5" x 11'6"	m 4.10 x 3.53
Utility	ft	6'1" x 3'10"	m 1.84 x 1.20
WC			

FIRST FLOOR



Floor plans are not to scale and all dimensions are approximate

FIRST FLOOR

Bedroom 1	ft	14'2" x 8'7"	m	4.31 x 2.63
Bedroom 2	ft	14'6" x 8'7"	m	4.43 x 2.63
Bedroom 3	ft	8'6" x 6'10"	m	2.60 x 2.10
Bathroom	ft	9'1" x 6'10"	m	2.75 x 2.10

THE CORNWELL

3 BED SEMI DETACHED | c. 920 sq ft / 85.4 sq m approx

**COLIN
GRAHAM
RESIDENTIAL**
028 90 832 832
colingrahamresidential.com

pinpoint.
028 9068 2777
pinpointproperty.com

**BlueHouse
Development**
bluehousedevlopment.com

**ALEXANDRA
PARK AVENUE**



CGI shown for illustration purposes only

THE ELLEN

3 BED DETACHED | c. 934 sq ft / 86.8 sq m approx

ALEXANDRA PARK AVENUE

GROUND FLOOR

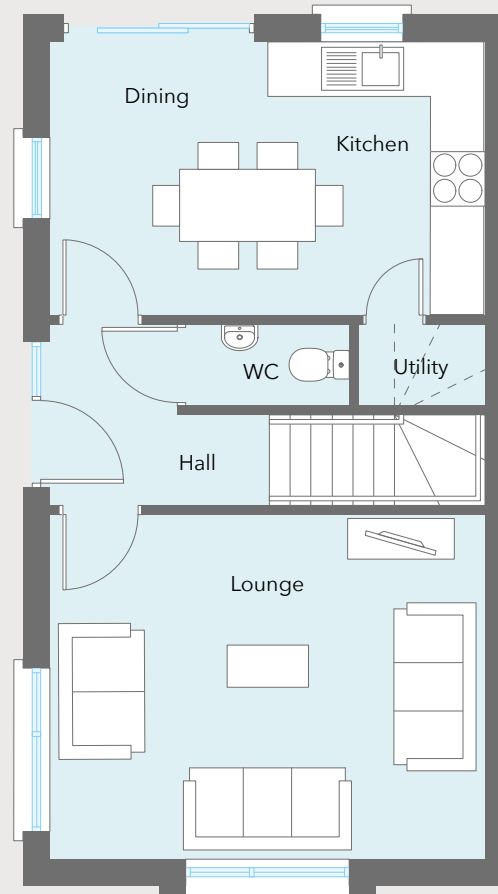
Entrance Hall with separate WC

Lounge	ft	15'8" x 12'7"	m	4.79 x 3.85
Kitchen Dining	ft	15'8" x 9'10"	m	4.79 x 3.00
Utility	ft	4'8" x 2'10"	m	1.45 x 0.91

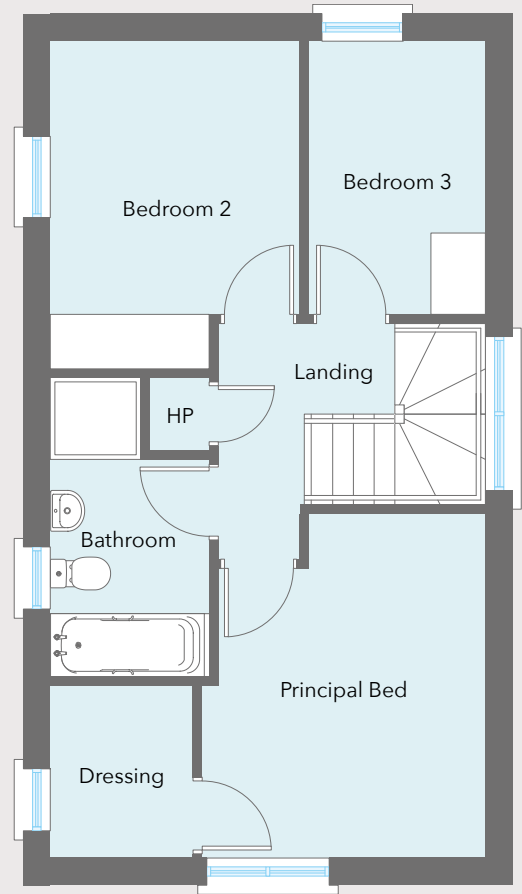
FIRST FLOOR

Principal Bedroom	ft	12'7" x 10'5"	m	3.87 x 3.19
Dressing	ft	6'7" x 4'10"	m	2.02 x 1.50
Bedroom 2	ft	11'9" x 9'1"	m	3.60 x 2.75
Bedroom 3	ft	9'10" x 6'4"	m	3.00 x 1.94
Bathroom	ft	10'7" x 5'6"	m	3.24 x 1.70

GROUND FLOOR



FIRST FLOOR



Floor plans are not to scale and all dimensions are approximate

THE ELLEN

3 BED DETACHED | c. 934 sq ft / 86.8 sq m approx

**COLIN
GRAHAM
RESIDENTIAL**
028 90 832 832
colingrahamresidential.com

pinpoint.
028 9068 2777
pinpointproperty.com

**BlueHouse
Development**
bluehousedevlopment.com

**ALEXANDRA
PARK AVENUE**



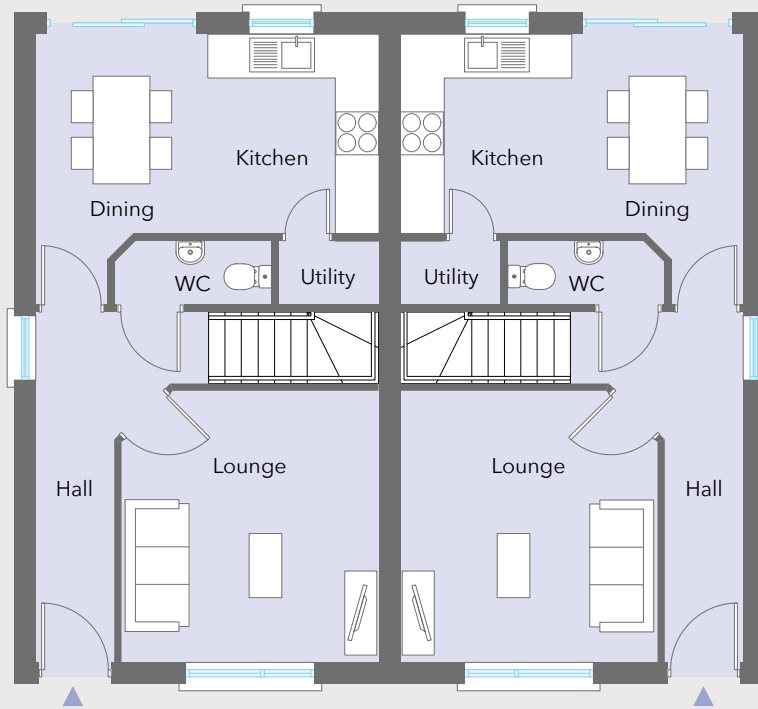
CGI shown for illustration purposes only

THE ABBOTT

3 BED SEMI DETACHED | c. 920 sq ft / 85.4 sq m approx

ALEXANDRA PARK AVENUE

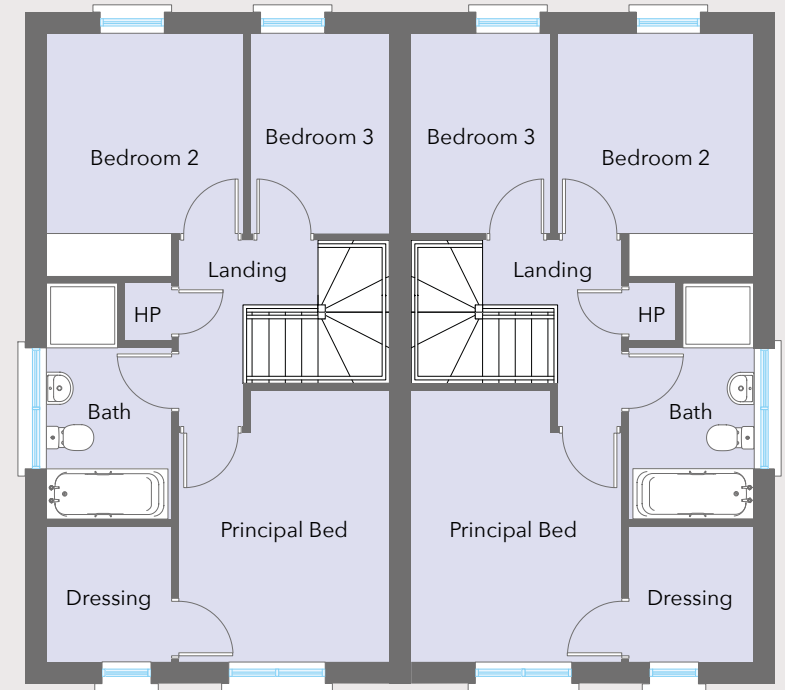
GROUND FLOOR



GROUND FLOOR

Entrance Hall with separate WC				
Lounge	ft	12'5" x 11'9"	m	3.80 x 3.60
Kitchen Dining	ft	15'9" x 9'4"	m	4.83 x 2.84
Utility	ft	4'8" x 2'10"	m	1.45 x 0.90

FIRST FLOOR



Floor plans are not to scale and all dimensions are approximate

FIRST FLOOR

Principal Bedroom	ft	12'5" x 9'10"	m	3.80 x 3.03
Dressing	ft	5'9" x 5'6"	m	1.80 x 1.70
Bedroom 2	ft	11'3" x 9'1"	m	3.44 x 2.75
Bedroom 3	ft	9'4" x 6'5"	m	2.84 x 1.98
Bathroom	ft	11'2" x 5'6"	m	3.39 x 1.70

THE ABBOTT

3 BED SEMI DETACHED | c. 920 sq ft / 85.4 sq m approx

**COLIN
GRAHAM
RESIDENTIAL**
028 90 832 832
colingrahamresidential.com

pinpoint.
028 9068 2777
pinpointproperty.com

**BlueHouse
Development**
bluehousedevlopment.com

**ALEXANDRA
PARK AVENUE**

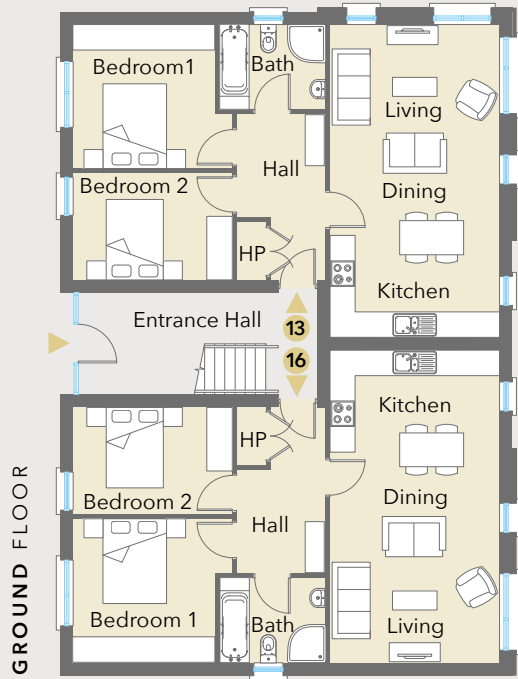


CGI shown for illustration purposes only

THE DICKSON APARTMENTS

2 BED APARTMENTS | c. 710 sq ft / 66 sq m approx

ALEXANDRA PARK AVENUE

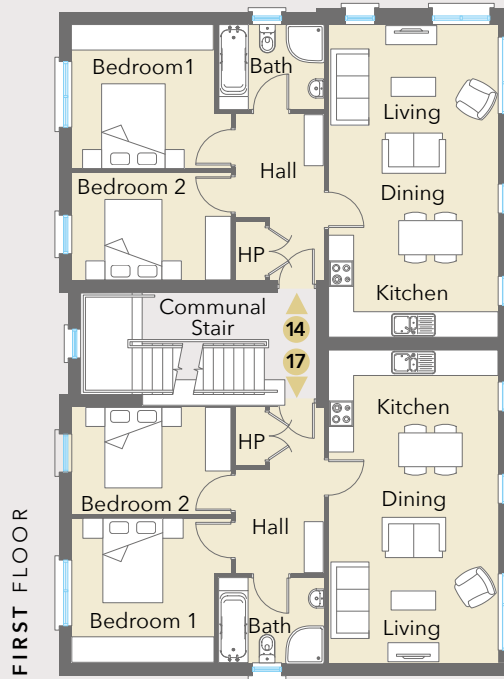


GROUND FLOOR

Floor plans are not to scale and all dimensions are approximate

Ground Floor - Apartments 13 & 16

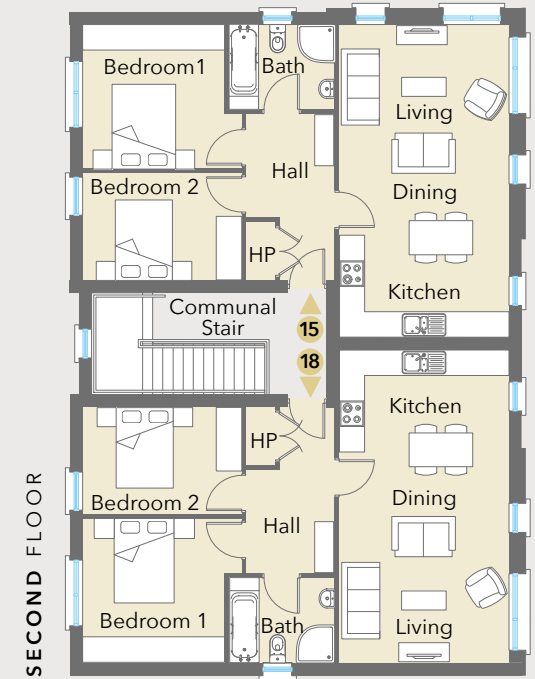
Living Kitchen Dining (max)	ft 24'7" x 13'1"	m 7.53 x 3.99
Bedroom 1	ft 11'2" x 11'1"	m 3.40 x 3.36
Bedroom 2	ft 12'3" x 8'2"	m 3.73 x 2.50
Bathroom	ft 8'2" x 6'10"	m 2.48 x 2.10



FIRST FLOOR

First Floor - Apartments 14 & 17

Living Kitchen Dining (max)	ft 24'7" x 13'1"	m 7.53 x 3.99
Bedroom 1	ft 11'2" x 11'1"	m 3.40 x 3.36
Bedroom 2	ft 12'3" x 8'2"	m 3.73 x 2.50
Bathroom	ft 8'2" x 6'10"	m 2.48 x 2.10



SECOND FLOOR

Second Floor - Apartments 15 & 18

Living Kitchen Dining (max)	ft 24'7" x 13'1"	m 7.53 x 3.99
Bedroom 1	ft 11'2" x 11'1"	m 3.40 x 3.36
Bedroom 2	ft 12'3" x 8'2"	m 3.73 x 2.50
Bathroom	ft 8'2" x 6'10"	m 2.48 x 2.10

THE DICKSON APARTMENTS

2 BED APARTMENTS | c. 710 sq ft / 66 sq m approx



028 90 832 832
colingrahamresidential.com



028 9068 2777
pinpointproperty.com



bluehousedevlopment.com

ALEXANDRA PARK AVENUE

THE BLAKE

THE CRANMORE

THE CRANMORE

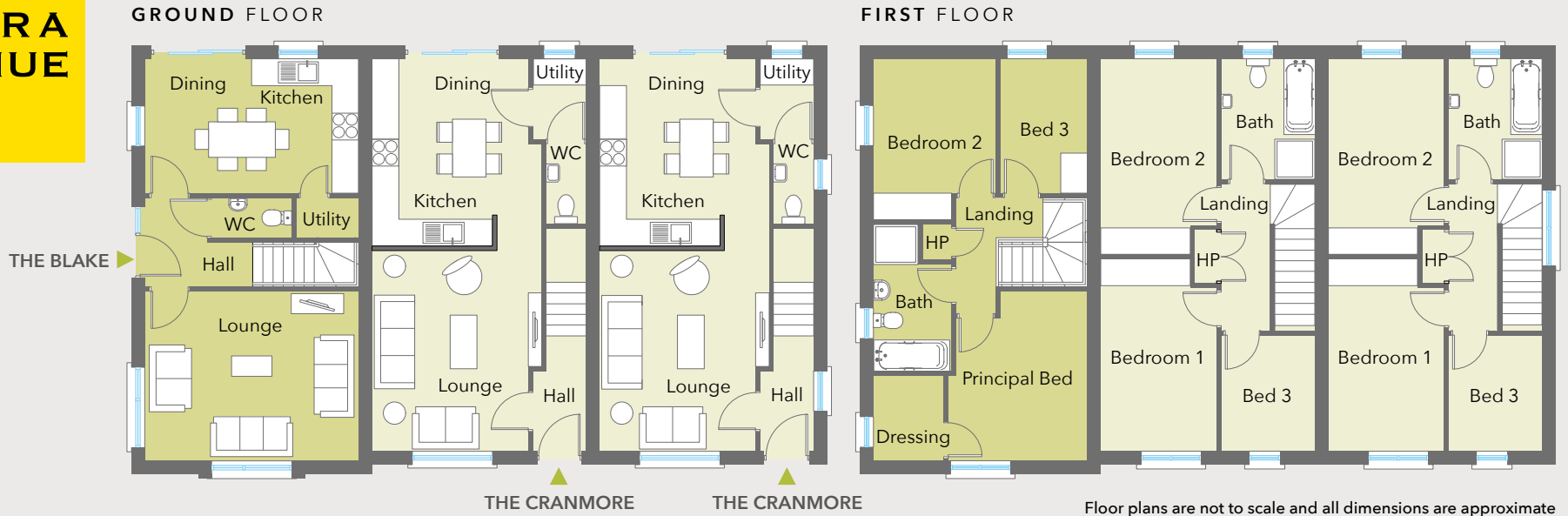


CGI shown for illustration purposes only

THE BLAKE and THE CRANMORE

3 BED TOWNHOUSES | THE BLAKE c. 943 sq ft approx / 87.6 sq m | THE CRANMORE c. 920 sq ft / 85.4 sq m approx

ALEXANDRA PARK AVENUE



GROUND FLOOR | THE BLAKE

Entrance Hall with separate WC

Lounge	ft	15'9" x 12'7"	m	4.83 x 3.85
Kitchen Dining	ft	15'9" x 9'4"	m	4.83 x 2.84
Utility	ft	4'8" x 2'10"	m	1.45 x 0.90

FIRST FLOOR

Principal Bedroom	ft	12'7" x 10'6"	m	3.87 x 3.23
Dressing	ft	6'7" x 4'10"	m	2.02 x 1.50
Bedroom 2	ft	11'9" x 9'1"	m	3.60 x 2.75
Bedroom 3	ft	9'10" x 6'5"	m	3.00 x 1.98
Bathroom	ft	10'7" x 5'6"	m	3.24 x 1.70

GROUND FLOOR | THE CRANMORE

Entrance Hall

Lounge	ft	15'3" x 11'6"	m	4.64 x 3.53
Kitchen Dining	ft	13'5" x 11'6"	m	4.10 x 3.53
Utility	ft	6'1" x 3'10"	m	1.84 x 1.20

WC

FIRST FLOOR

Bedroom 1	ft	14'2" x 8'7"	m	4.31 x 2.63
Bedroom 2	ft	14'6" x 8'7"	m	4.43 x 2.63
Bedroom 3	ft	8'6" x 6'10"	m	2.60 x 2.10
Bathroom	ft	9'1" x 6'10"	m	2.75 x 2.10

THE BLAKE and THE CRANMORE

3 BED TOWNHOUSES | THE BLAKE c. 943 sq ft / 87.6 sq m approx

| THE CRANMORE c. 920 sq ft / 85.4 sq m approx

**COLIN
GRAHAM
RESIDENTIAL**
028 90 832 832
colingrahamresidential.com

pinpoint.
028 9068 2777
pinpointproperty.com

**BlueHouse
Development**
bluehousedevlopment.com